

*For low viscosity materials such as
instantaneous adhesive agent*

Optimum for high-precision dispensing in small amount



Simple tube setting

- High precision dispensing without troublesome adjustment, easily feasible by anybody.

Elimination of liquid drip

- Liquid drip eliminated and bubble generation reduced even for low-viscosity liquid materials.

Simple Maintenance

- Only tube for liquid-exposed section.



Simple and secure tube placement achieved

- Long life of liquid material feeding tube thanks to our original tube installation mechanism.
- "Digital Timer" allowing for dispensing time setting with simple operation equipped.
- A dispensing pen with a remote switch for manual work (option) is available.

SPECIFICATIONS

Item name	Rotary-type tubing dispenser
Model	MT-410
Dispensing method	Rotary tubing system
Dispensing mode	Timed mode/manual mode
Dispensing time setting range	0.01 to 99.99s
Range of rotational speed setting	0 to 120rpm
Input signal	External dispensing signal
Output signal	Dispensing completion signal
Rated power supply and frequency	AC 100 to 240 V, 50/60 Hz
Power consumption	25 W
Compatible standards	CE-marking (EMC and low voltage directives), EU RoHS
External dimensions	W188×D208×H75mm (projection portion excluded)
Weight	3.0kg

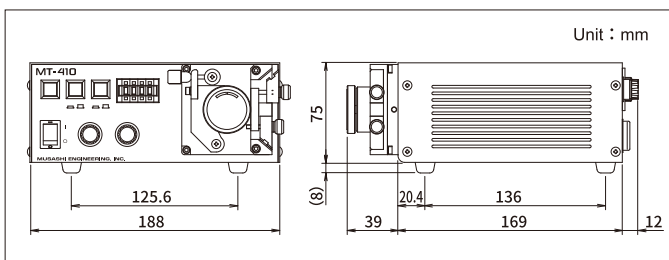
APPLICABLE DISPENSING MATERIALS

Anaerobic low viscosity materials (such as instantaneous adhesive & UV hard-type adhesive) low viscosity epoxy resin, silicone oil, etc.

APPLICATIONS

Adhesion, potting, coating, dot dispensing, line dispensing, injection, filling, etc.

EXTERNAL DIMENSION DRAWINGS



Dispensing pen for tubing dispenser



Item name	Model	Code length
Dispensing pen [LS-NH3 type16 4pin]	LS-NH3-1604P	1m

LIST OF PTFE TUBES

A wide range of tubes is available to meet your liquid viscosity and dispensing volume needs.

Use our black PTFE tube if you will be dispensing UV cured material.

PTFE tubes for tubing dispenser			
Model name	Tube outside diameter (φ)	Tube inside diameter (φ)	Tube length
TT-32	0.75	0.25	10m
TT-30	0.76	0.30	10m
TT-28	0.84	0.38	10m
TT-26	0.92	0.46	10m
TT-24	1.06	0.56	10m
TT-22	1.18	0.68	10m
TT-21	1.31	0.81	10m
TT-20	1.46	0.86	10m
TT-19	1.56	0.96	10m
TT-18	1.67	1.07	10m
TT-17	1.79	1.19	10m
TT-16	1.95	1.35	10m
TT-15	2.10	1.50	10m
TT-14	2.28	1.68	10m
TT-13	2.53	1.93	10m
TT-12	2.76	2.16	10m
TT-11	3.01	2.41	10m
TT-10	3.29	2.69	10m

Black PTFE tubes for tubing dispenser (for UV curing materials)			
Model name	Tube outside diameter (φ)	Tube inside diameter (φ)	Tube length
TT-30B	0.76	0.30	10m
TT-28B	0.84	0.38	10m
TT-26B	0.92	0.46	10m
TT-24B	1.06	0.56	10m
TT-22B	1.18	0.68	10m
TT-21B	1.31	0.81	10m
TT-20B	1.46	0.86	10m
TT-19B	1.56	0.96	10m
TT-18B	1.67	1.07	10m
TT-17B	1.79	1.19	10m
TT-16B	1.95	1.35	10m
TT-15B	2.10	1.50	10m
TT-13B	2.53	1.93	10m
TT-12B	2.76	2.16	10m
TT-11B	3.01	2.41	10m
TT-10B	3.29	2.69	10m



Safety precaution

Make sure to read the instruction manual before you use the unit, for your safety.

* We reserve the right to change the specifications without notice.
* All copyrights are retained by MUSASHI ENGINEERING. Reprinting, reproducing, and/or transmitting as electronic data in whole or in part these material without prior written permission is strictly prohibited.

MUSASHI ENGINEERING, INC. is certified and registered according to ISO14001 ENVIRONMENTAL MANAGEMENT.



<http://www.musashi-engineering.co.jp/english/>

World Leading Dispenser

MUSASHI ENGINEERING, INC.

HEAD OFFICE

8-7-4, Shimorenjaku, Mitaka, Tokyo, 181-0013, Japan TEL : (81)422-76-7111 / FAX : (81)422-76-7122

BRANCH

TOKYO, OSAKA, NAGOYA, SENDAI, FUKUOKA, SAITAMA, NAGANO, EAST-KANTO, AKITA, KANAZAWA

SINGAPORE 114 Lavender Street, #08-88/89 CT Hub 2, Singapore 338729
TEL : (65)6258-2422 / FAX : (65)6258-4844

THAILAND No.12 Soi Bangna-Trad 25, Bangna, Bangkok 10260 Thailand
TEL : (66)2-022-9015 / FAX : (66)2-769-5450

INDONESIA Jl. MH. Thamrin, Robson Square, Block A-15, Lippo Cikarang, Bekasi 17550, Jawa Barat, Indonesia
TEL : (62)21-8990-5005 / FAX : (62)21-8990-5004

GERMANY Leopoldstrasse 244, 1.Stock 80807 Munich Germany
TEL : (49)89-208039-470 / FAX : (49)89-208039-478

KOREA (902 No. 9 F. #C, Korea Bio Park.) 700, Daewangpangyo-ro, Bundang-gu, Seongnam-si, Gyeonggi-do 13488, Korea
TEL : (82)31-702-3811 / FAX : (82)31-702-3881

TAIWAN 8F-2, No. 158, Sec. 2, Gongdao 5th Road, Hsinchu, Taiwan 30070
TEL : (886)3-572-9200 / FAX : (886)3-572-9300

CHINA

HONG KONG Unit 1706, 17/F., Greenfield Tower, (South)Concordia Plaza, No.1 Science Museum Road, T.S.T.East, Kowloon, H.K.
TEL : (852)2620-5799 / FAX : (852)2620-5771

SHANGHAI A-120 Room, No.525 Xian Feng Street (No.55 Jin Yu Road), Min Hang, Shanghai, China
TEL : (86)21-6446-7881 / FAX : (86)21-6446-7882

SHENZHEN Room 702, West Tian'an Tech Plaza II, Tian'an Cyber Park, Futian District Shenzhen, China
TEL : (86)755-8346-6822 / FAX : (86)755-8346-6866

TIANJIN Room 1206, Sino Ocean International Center, No. 40 Huachang Road, Hedong District, Tianjin
TEL : (86)22-5856-2051

SUZHOU Room 1010, No.188 Wang Dun Road, GENWAY BUILDING, Suzhou City Industrial estate Distric, Jiangsu, CHINA
TEL : (86)512-6878-4428 / FAX : (86)512-6878-4438